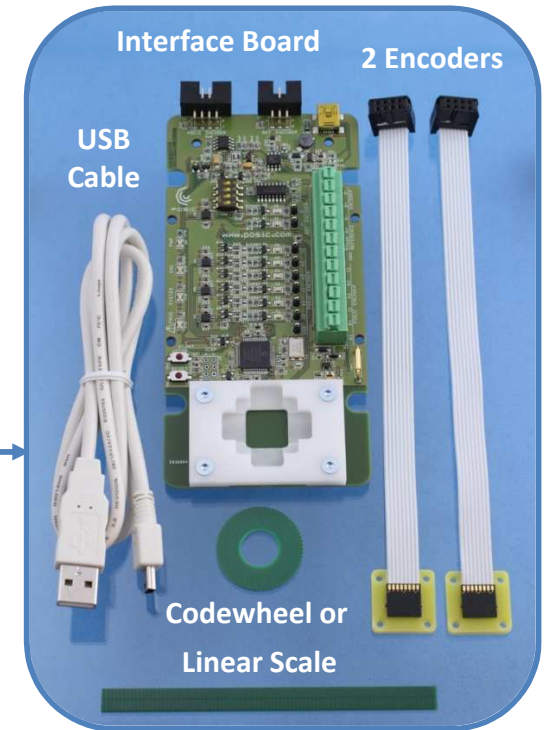




## Quick Start Guide for Evaluation & Programming Tool

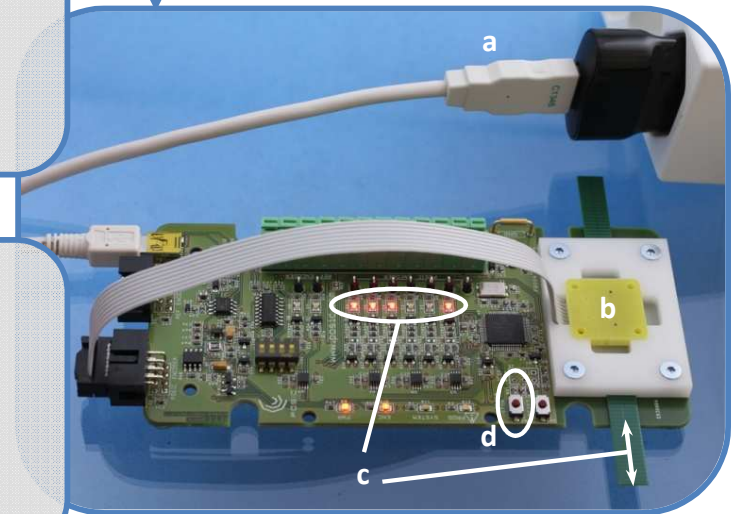
### Step 1: Inspect contents

- Interface Board incl. white plastic target-holder
  - Codewheel or linear scale or gear\*
  - Two encoders on encoder-holder with cable and connector
  - USB-cable
  - ASSIST software can be downloaded from POSIC's website
- \* In the case of a gear, the Interface Board is supplied without white plastic target-holder



### Step 2: Operate without PC software

- Connect Interface Board to a USB power source
- Place the encoder in front of the codewheel or scale
- Move the codewheel or scale and observe the A quad B output signals on the Signal LEDs
- Use the START/STOP button to toggle the encoder on/off

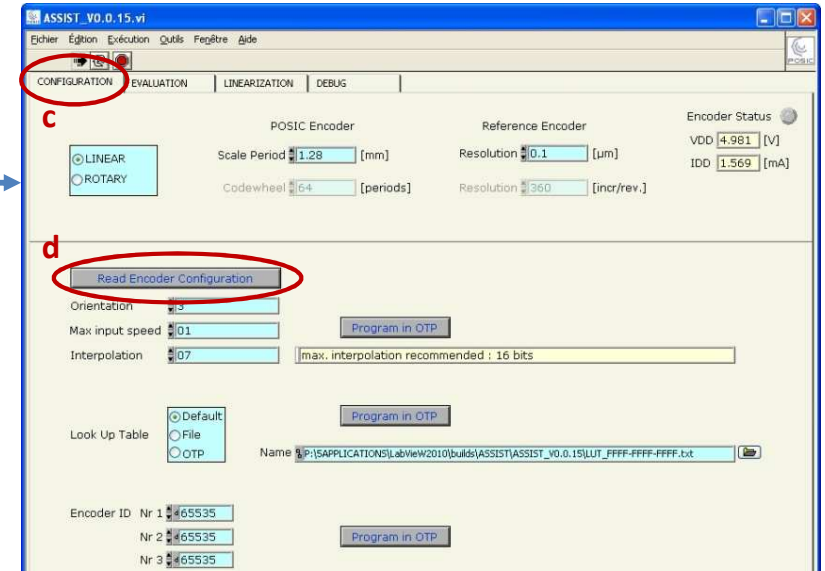


### Step 3: Install software

Install the ASSIST software and the USB driver according to the instructions on the ASSIST download page or the user manual chapter 3.

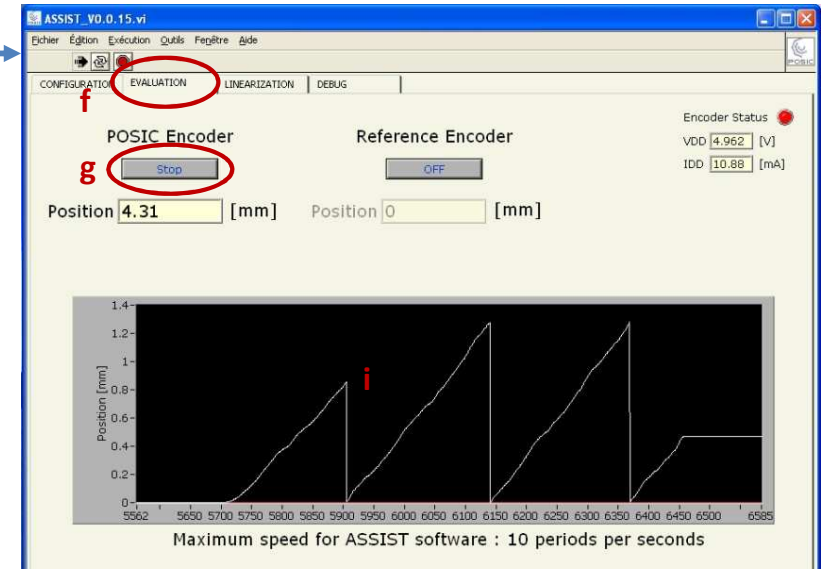
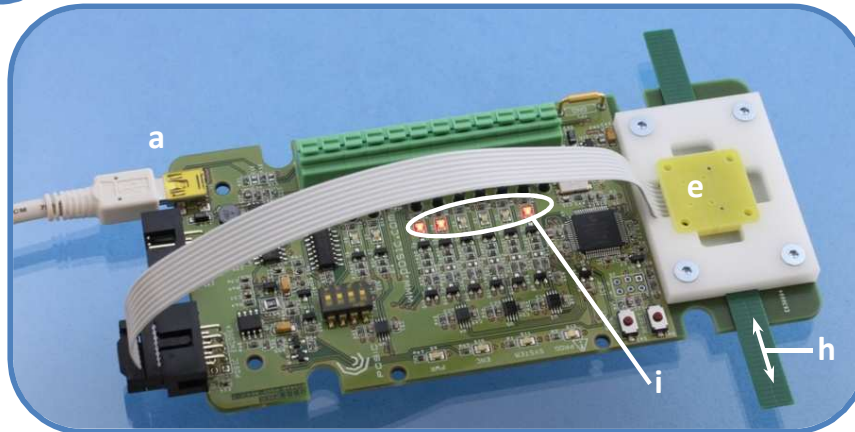
## Step 4: Configuration

- Connect Interface Board to PC using USB cable
- Launch ASSIST on your PC
- ASSIST always starts in the configuration window
- Press « Read Encoder Configuration »: the encoder configuration is read and displayed



## Step 5: Evaluation

- Place the encoder in front of codewheel or scale
- Go to the « Evaluation » window
- Press « Start » in the Evaluation window
- Gently move the scale
- The position is displayed in the graph and by the Signal LEDs on the Interface Board



Detailed information about measurements with a reference encoder, linearization, debug and troubleshooting can be found in the ASSIST User Manual, which can be downloaded from POSIC's website.