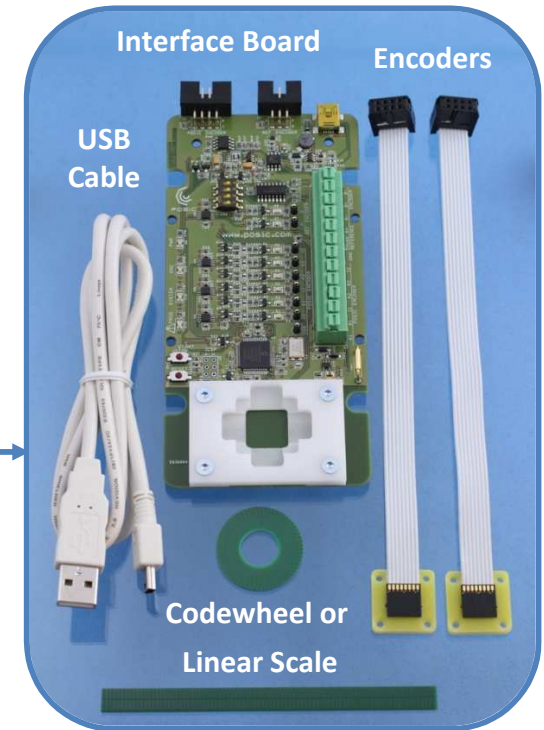




## Quick Start Guide for Evaluation & Programming Tool

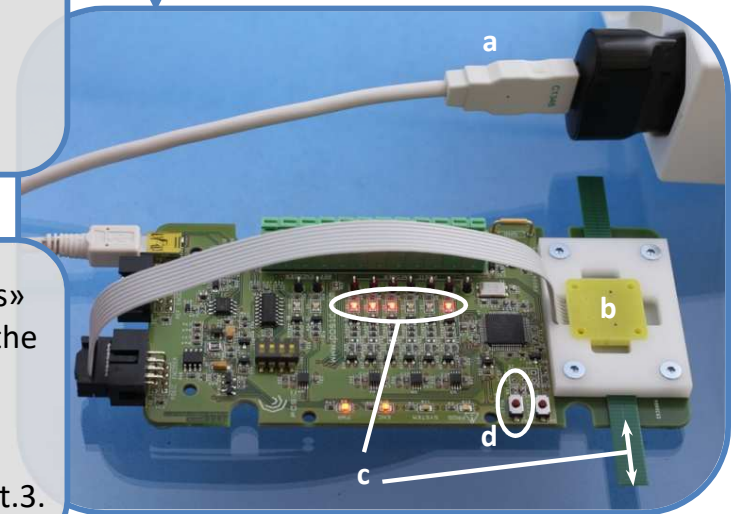
### Step 1: Inspect contents

- Interface Board incl. white plastic target-holder
  - Codewheel or linear scale or gear\*
  - Encoders on encoder-holder with cable and connector
  - USB-cable
  - ASSIST software: downloaded from POSIC's website
- \* In the case of a gear, the Interface Board is supplied without white plastic target-holder



### Step 2: Operate without PC software

- Connect Interface Board to a USB power source
- Place the ID- or IT-encoder in front of the codewheel or scale
- Move the codewheel or scale and observe the A quad B output signals on the Signal LEDs
- Use the START/STOP button to toggle the encoder on/off



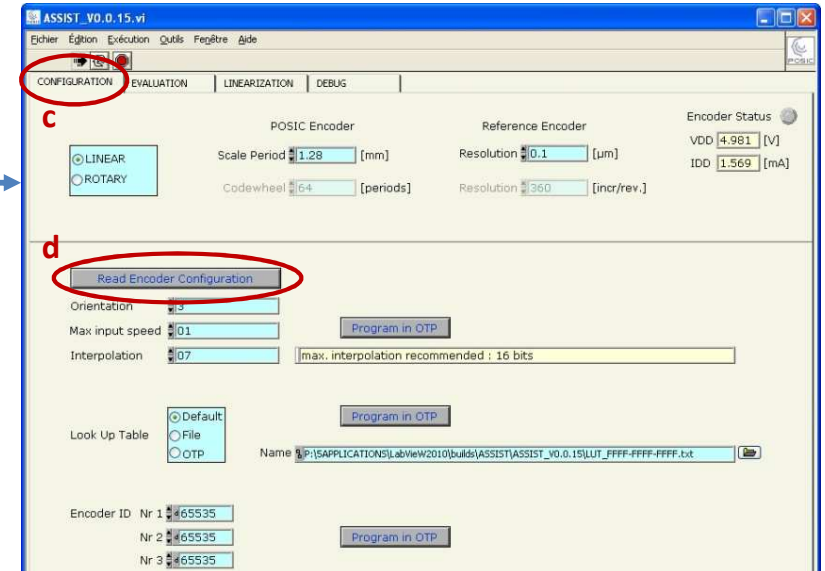
### Step 3: Install software

The ASSIST software is available in «My Downloadable Products» in your POSIC-account. If you have no POSIC-account: a link to the ASSIST software is sent in an email together with the invoice.

Install the ASSIST software and the USB driver according to the instructions on the ASSIST download page or user manual chapt.3.

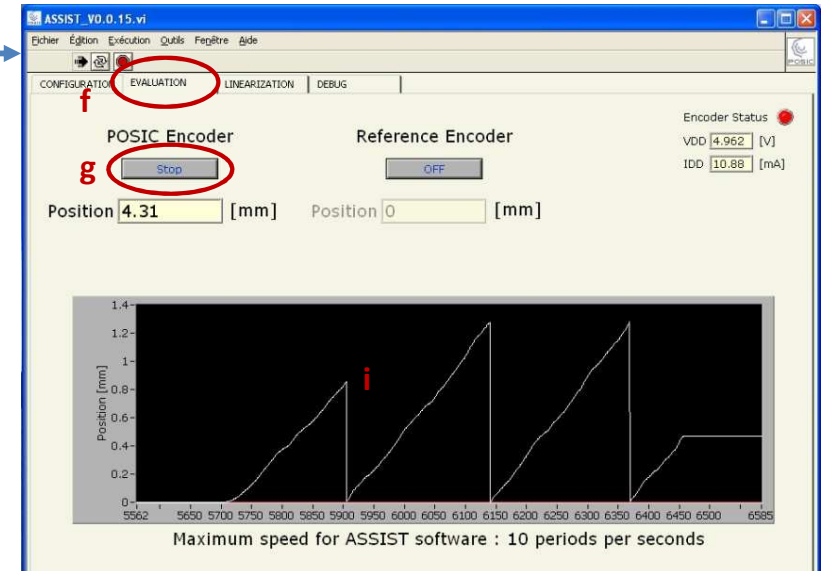
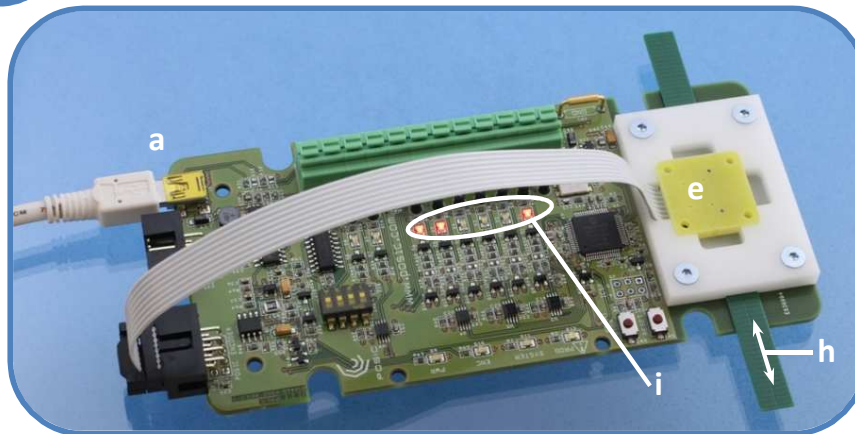
## Step 4: Configuration

- Connect Interface Board to PC using USB cable
- Launch ASSIST on your PC
- ASSIST always starts in the configuration window
- Press « Read Encoder Configuration »: the encoder configuration is read and displayed



## Step 5: Evaluation

- Place the encoder in front of codewheel or scale
- Go to the « Evaluation » window
- Press « Start » in the Evaluation window
- Gently move the scale or codewheel
- The position is displayed in the graph and by the Signal LEDs on the Interface Board



Detailed information about measurements with a reference encoder, linearization, debug and troubleshooting can be found in the ASSIST User Manual, which can be downloaded from POSIC's website.